



Package Contents



UniFi WiFi BaseStation XG



Adjustment Bracket



Pole Clamp



Carriage Bolts (Qty. 4)



Flange Nuts (Qty. 4)



Lag Screws (Qty. 4)



Gigabit PoE (50V, 1.2A)



Power Cord

Installation Requirements

- 13 mm wrench
- Category 5 (or above) UTP cable for indoor installations



IMPORTANT: The UWB-XG requires the UniFi Network Application v5.7 or higher, available at:
ui.com/download/unifi



- Shielded Category 5 (or above) cabling should be used for all outdoor wired Ethernet connections and should be grounded through the AC ground of the PoE. We recommend that you protect your networks from harmful outdoor environments and destructive ESD events with industrial-grade, shielded Ethernet cable from Ubiquiti. For more details, visit: ui.com/toughcable

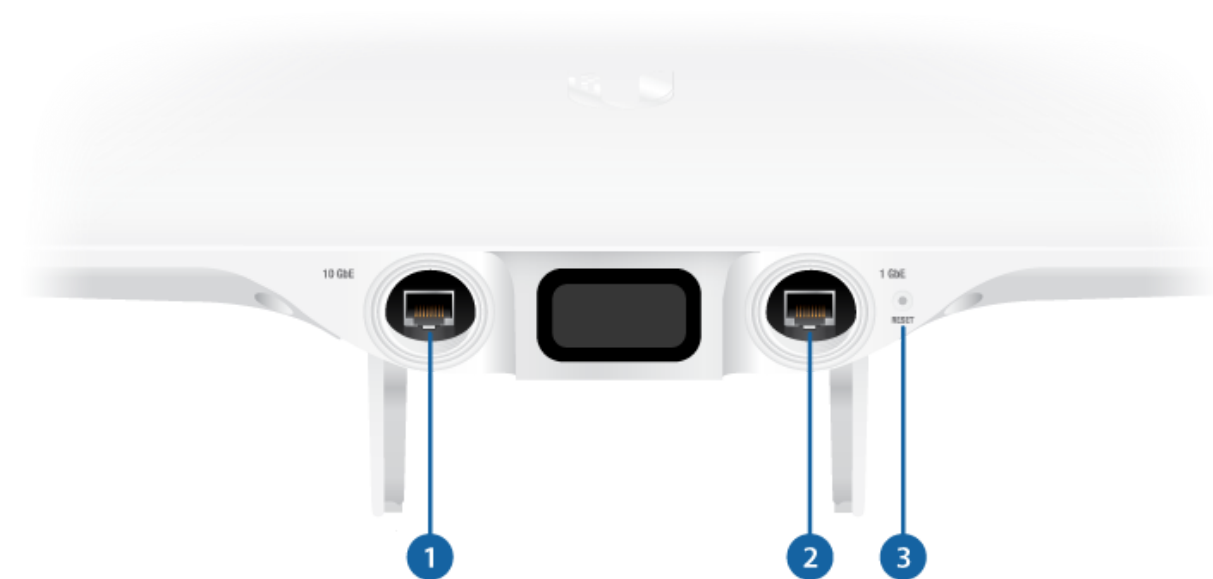
System Requirements

- Linux, Mac OS X, or Microsoft Windows 7/8/10
- Java Runtime Environment 1.8 or above recommended
- Web Browser: Google Chrome (Other browsers may have limited functionality.)
- UniFi Network Application v5.7 or newer (available at: ui.com/download/unifi)

Hardware Overview

LED

Ports



1 10 GbE

The 10 GbE port is a 1/10 Gbps Ethernet port used to connect to the LAN and DHCP server. It can also be used to connect the power.



Note: The UWB-XG can be powered using an 802.3bt PoE switch or the included Gigabit PoE adapter. For instructions, see [Connecting Power](#).

2 1 GbE

to connect the power.

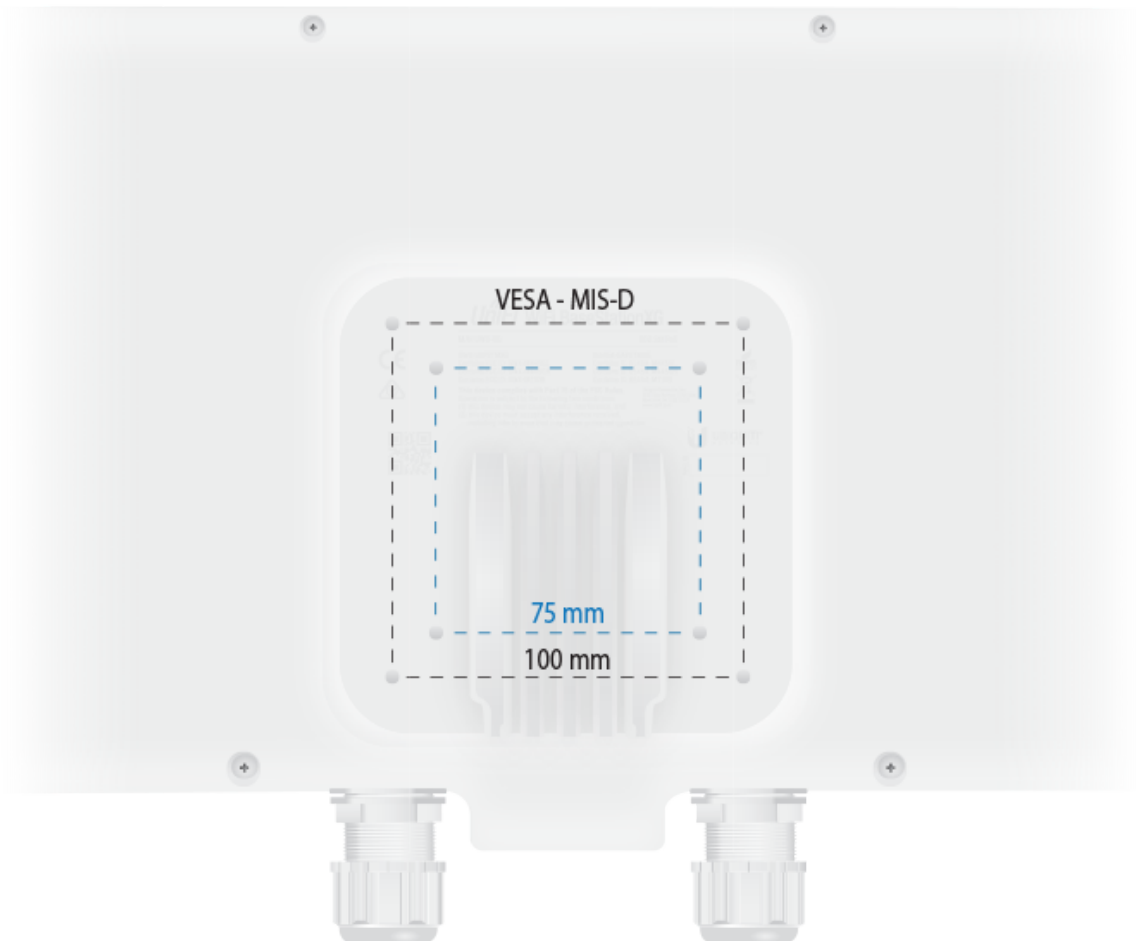
3 Reset

The Reset button serves two functions for the UWB-XG:

- **Restart** Press and release the Reset button quickly.
- **Restore to Factory Default Settings** Press and hold the Reset button for more than five seconds.

VESA Mounting

If you choose to use your own mount, remove the four M4 x 10 screws from the back of the UWB-XG and detach the pre-installed mount.

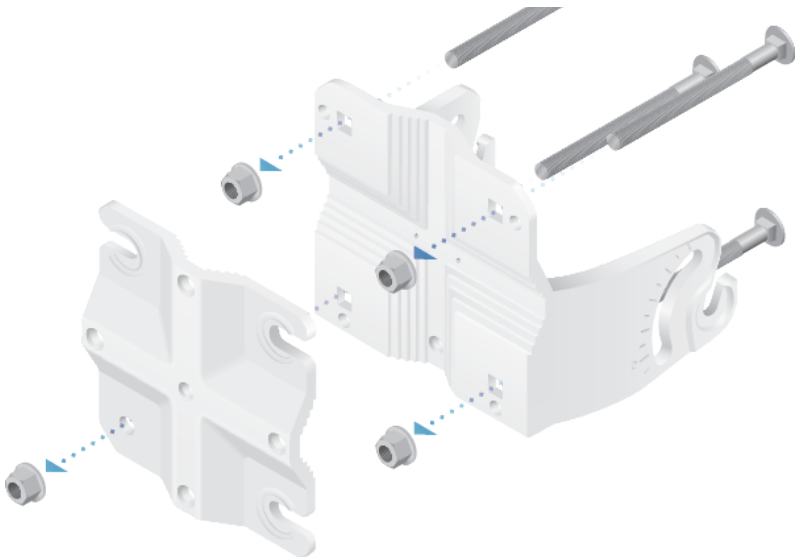


Hardware Installation

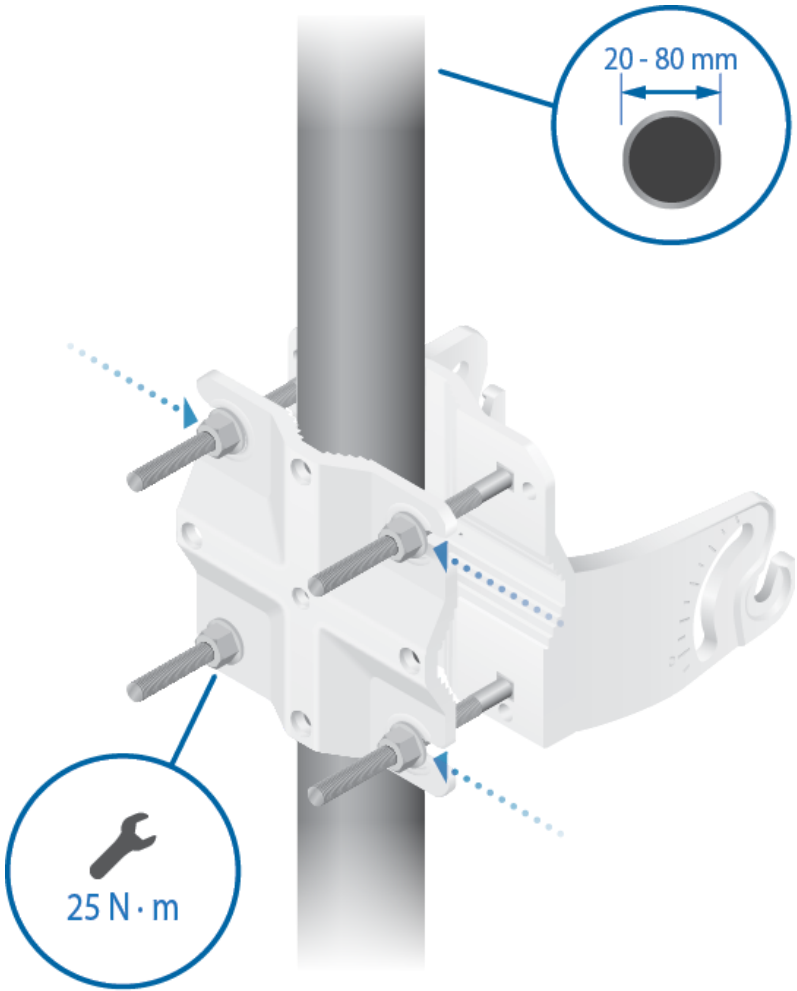
Pole Mount

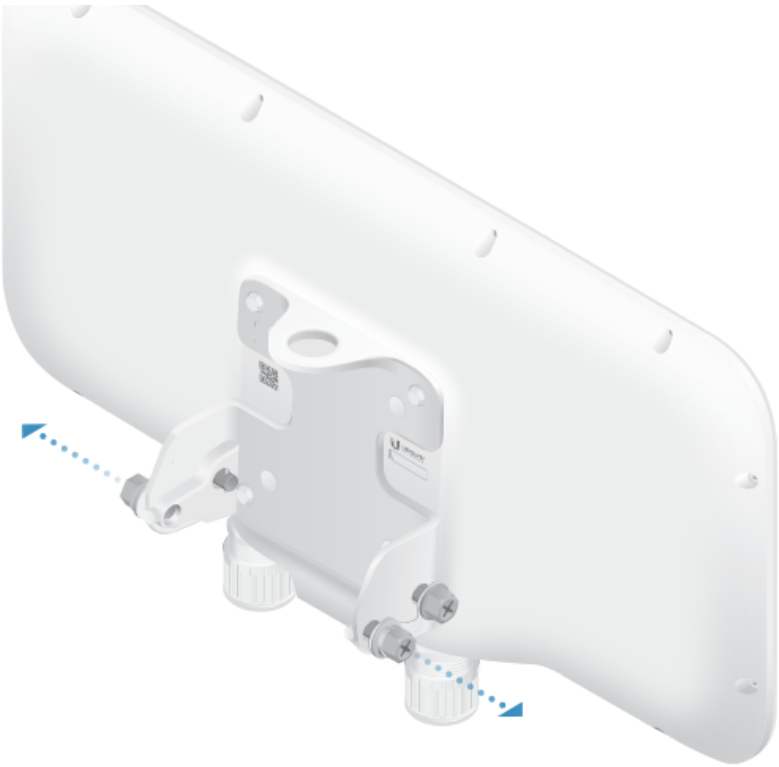


UWB-XG Quick Start Guide

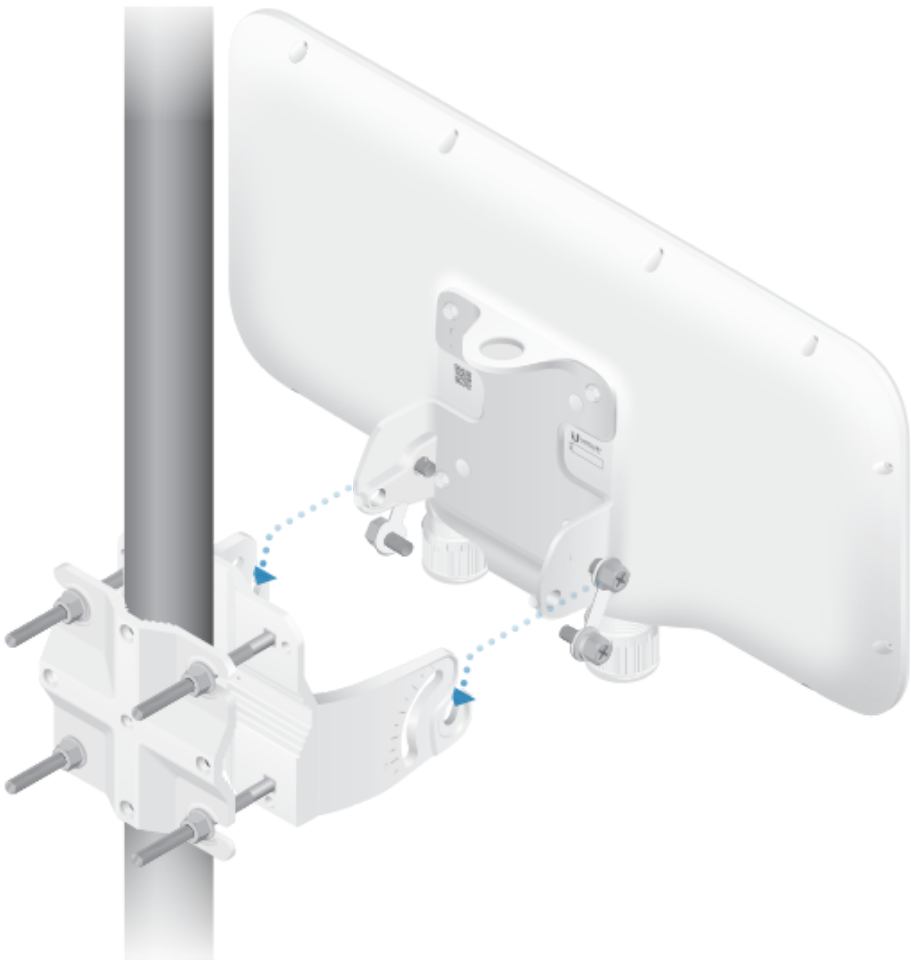


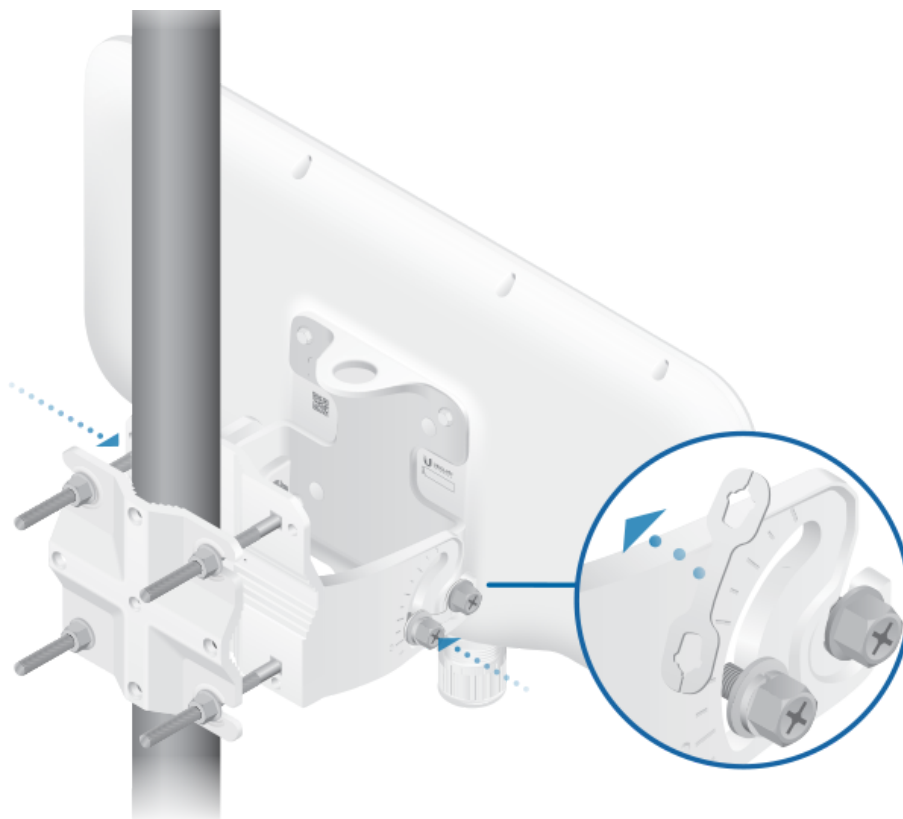
2.



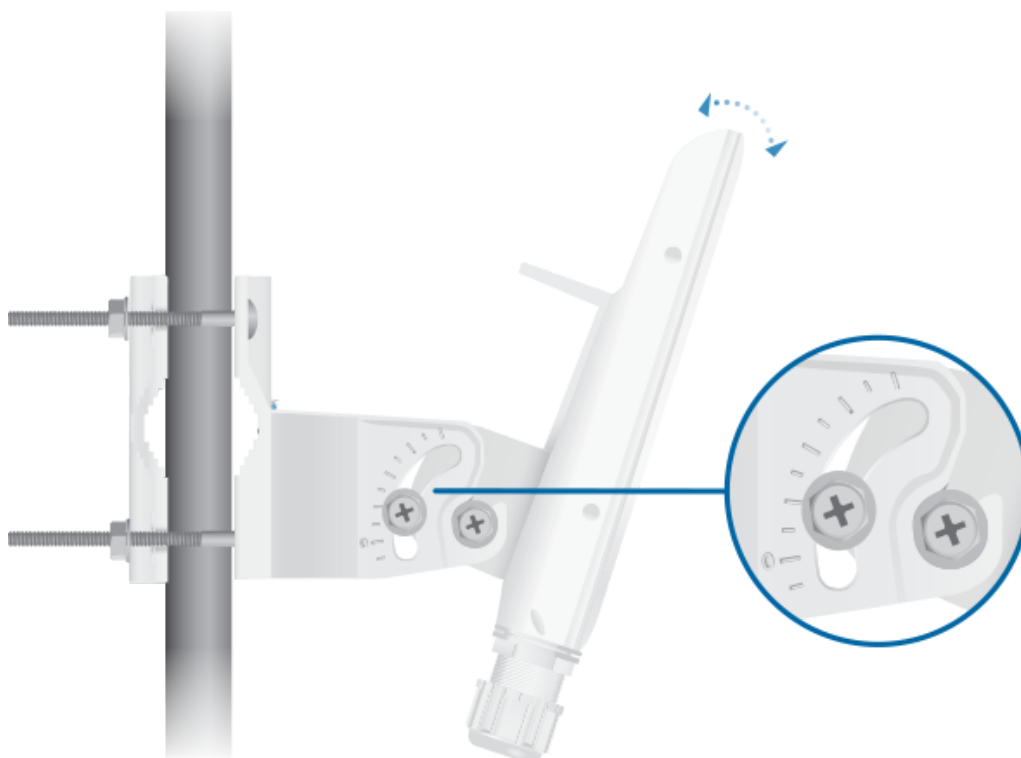


4.





6.



7. Proceed to [Connecting Ethernet](#).

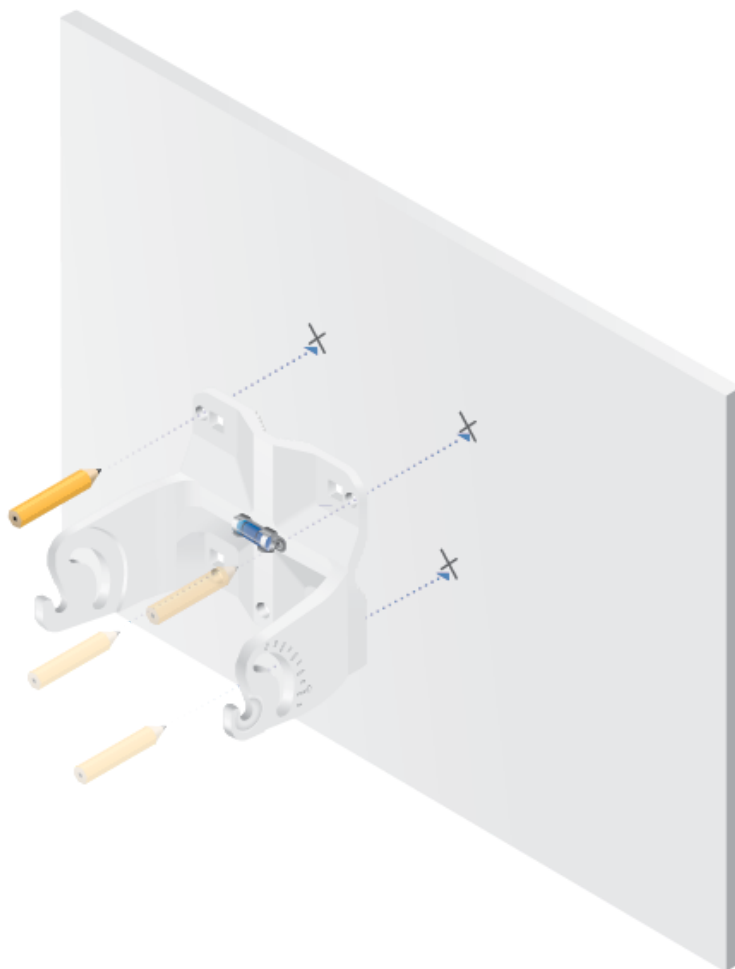
Wall Mount

To mount the UWB-XG on a wall or other sturdy flat surface, securely attach the Adjustment Bracket to the wall using the four Lag Screws.



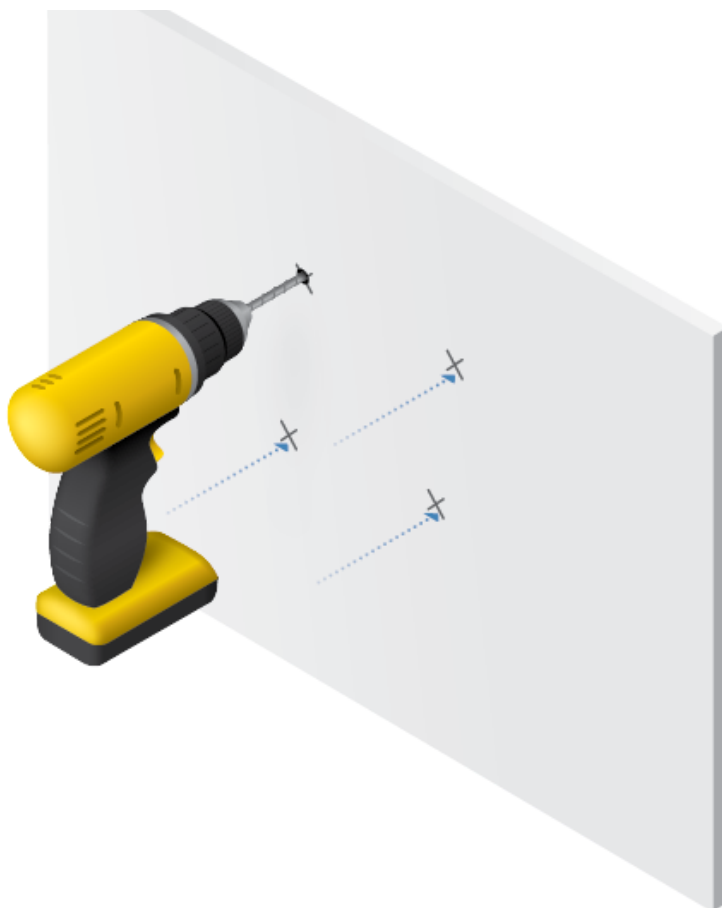
Structure.

1.

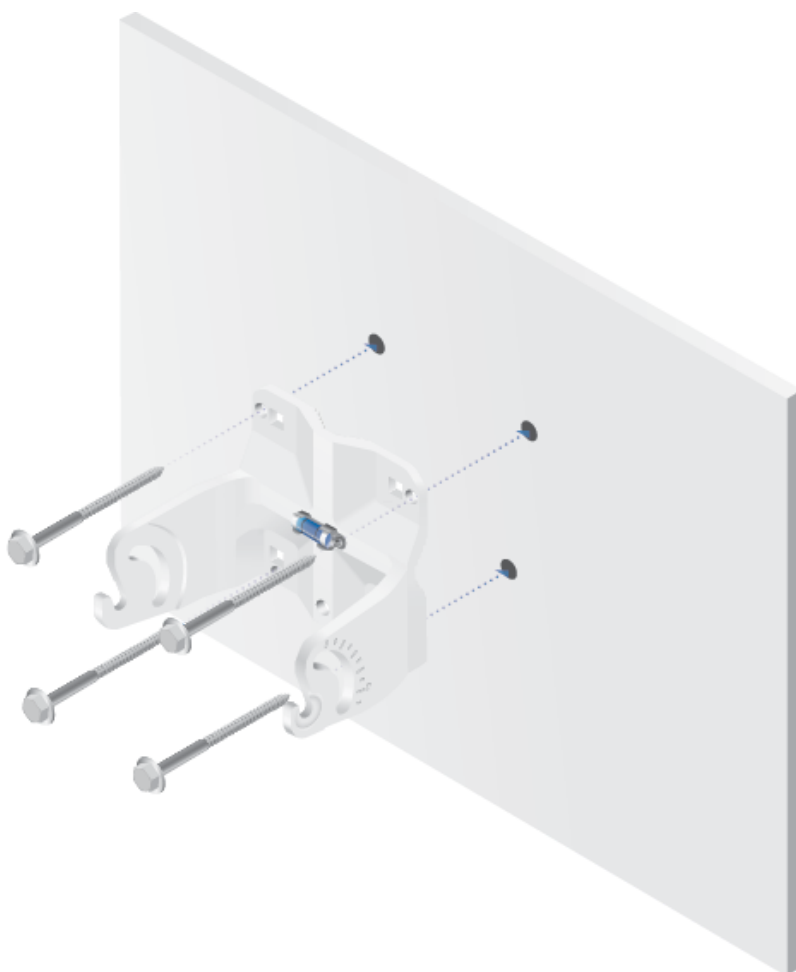




UWB-XG Quick Start Guide

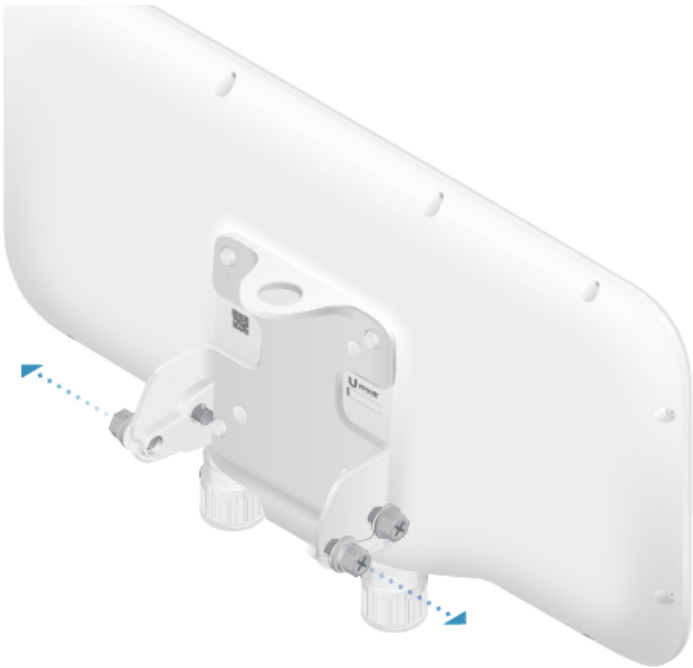


3.

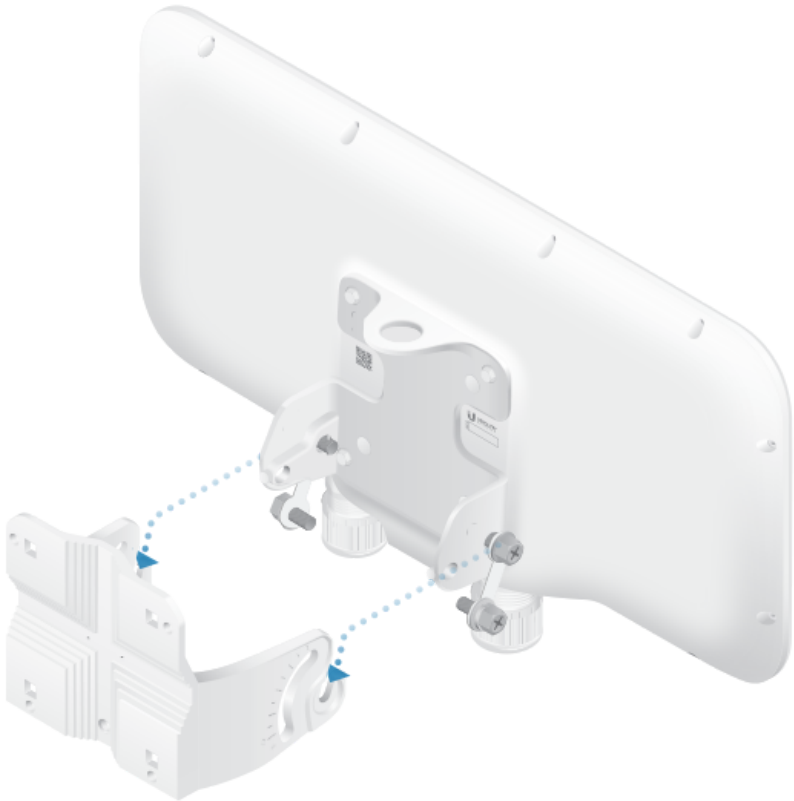


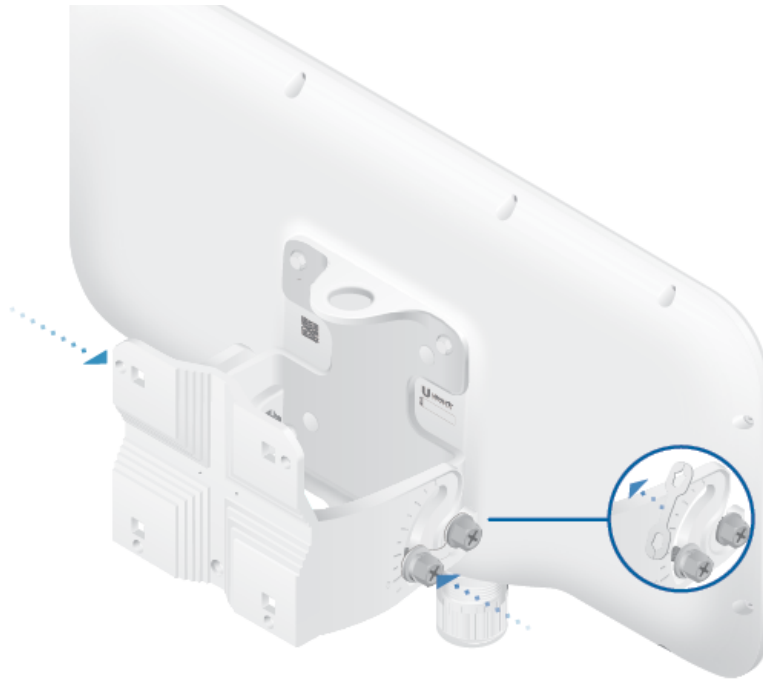


UWB-XG Quick Start Guide

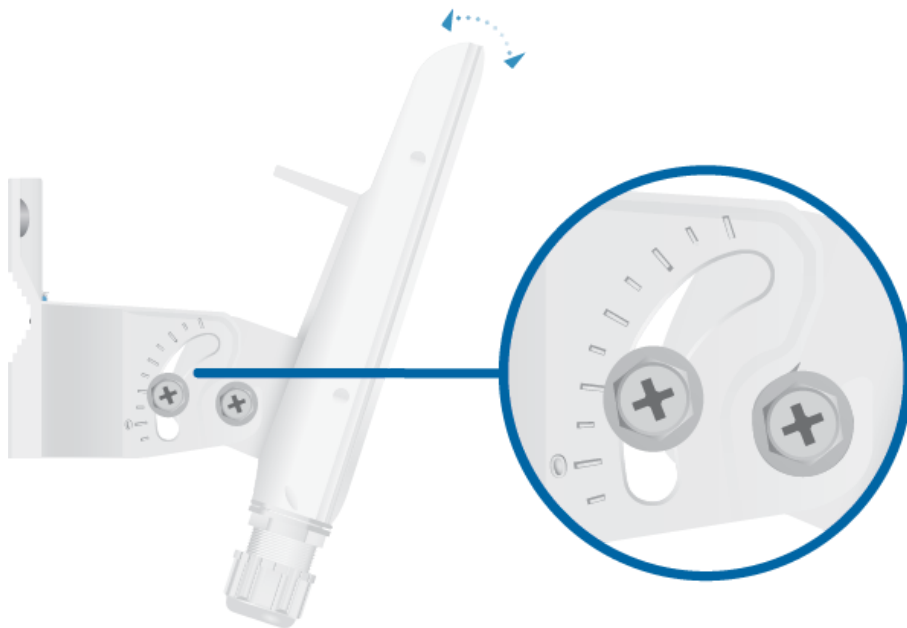


5.





7.



8. Proceed to [Connecting Ethernet](#).

Connecting Ethernet



Note: If you are using TOUGH Cable, we recommend attaching the TOUGH Cable Connector(s) after you insert the cable(s) into the cable gland(s).

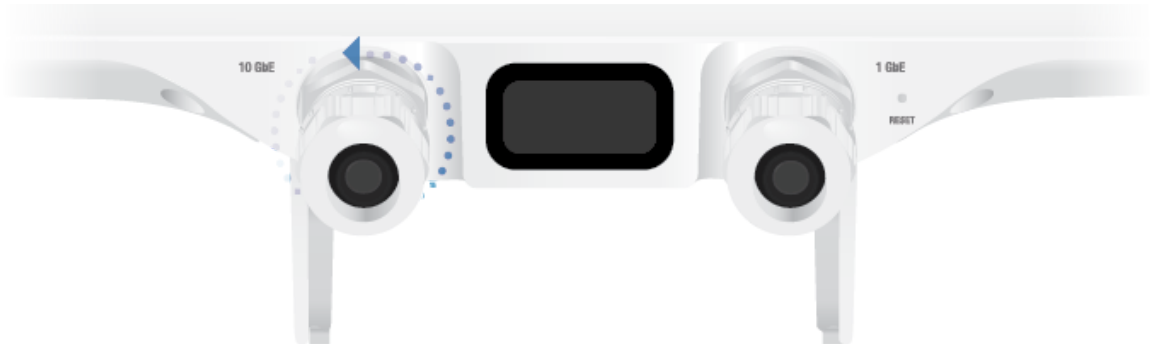
The cable gland is comprised of the following components:



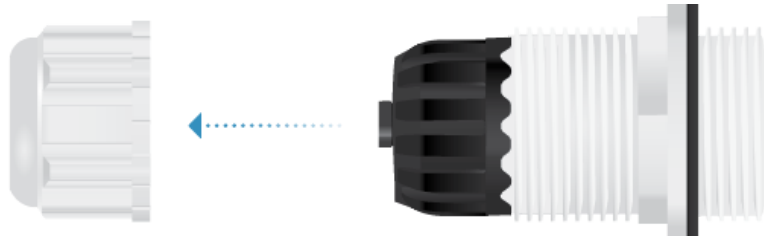
UWB-XG Quick Start Guide



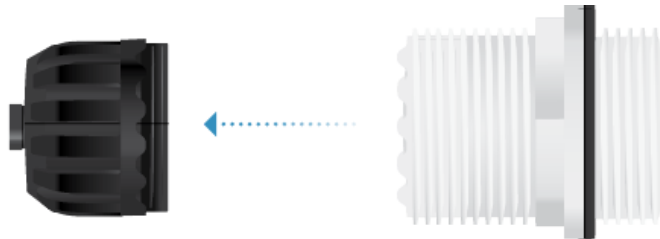
1.



2.



3.



4.



5.



6.



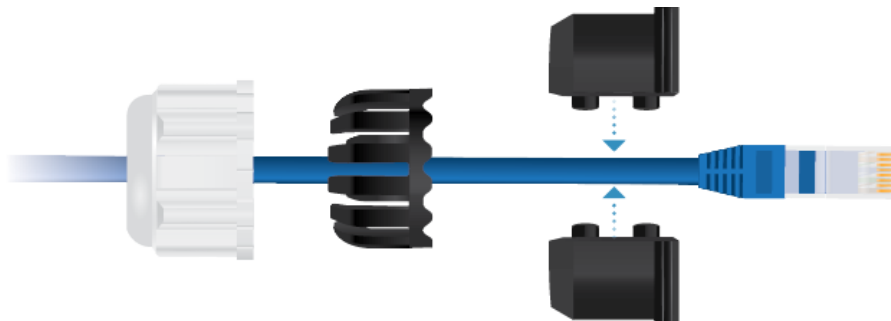


UWB-XG Quick Start Guide

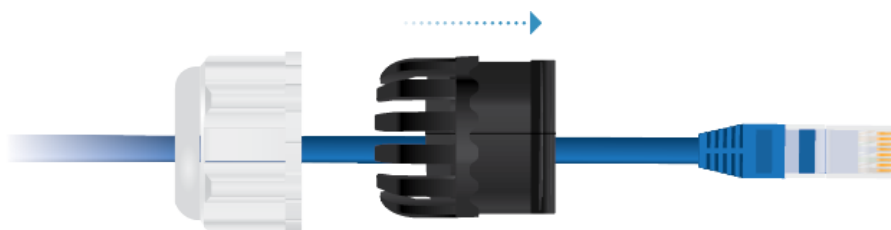
8.



9.



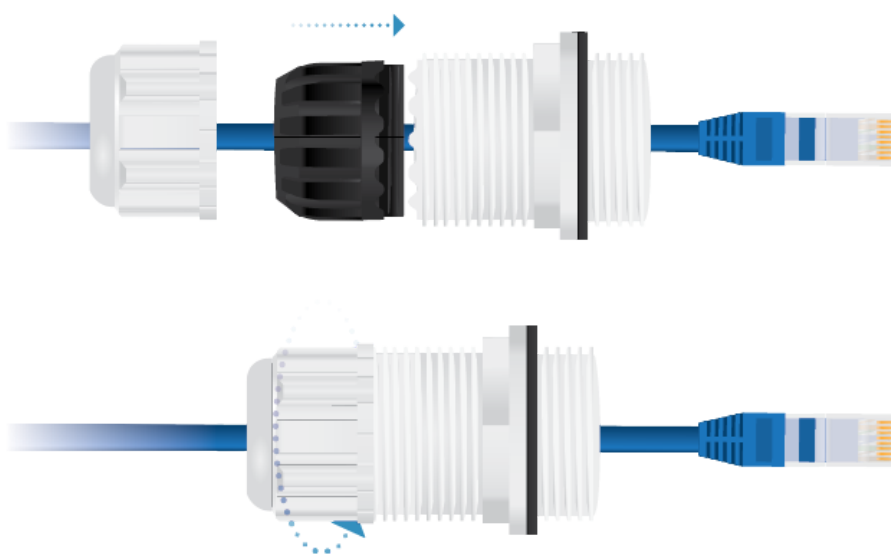
10.



11.

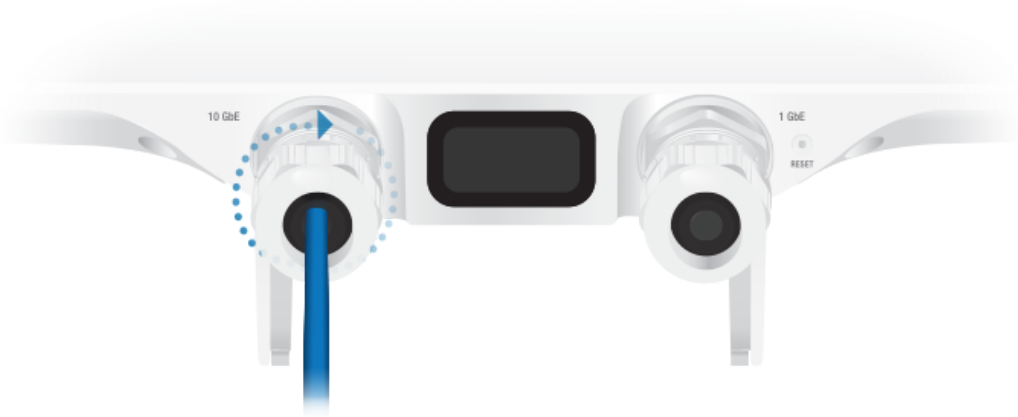


12.





14.



15. Repeat steps 1-14 to connect an Ethernet cable to the 1 GbE port if one of the following conditions applies:

- You will use the 1 GbE port for bridging.
- You will use the 1 GbE port for 802.3bt PoE.
- You will use the included Gigabit PoE adapter to power the UWB-XG.

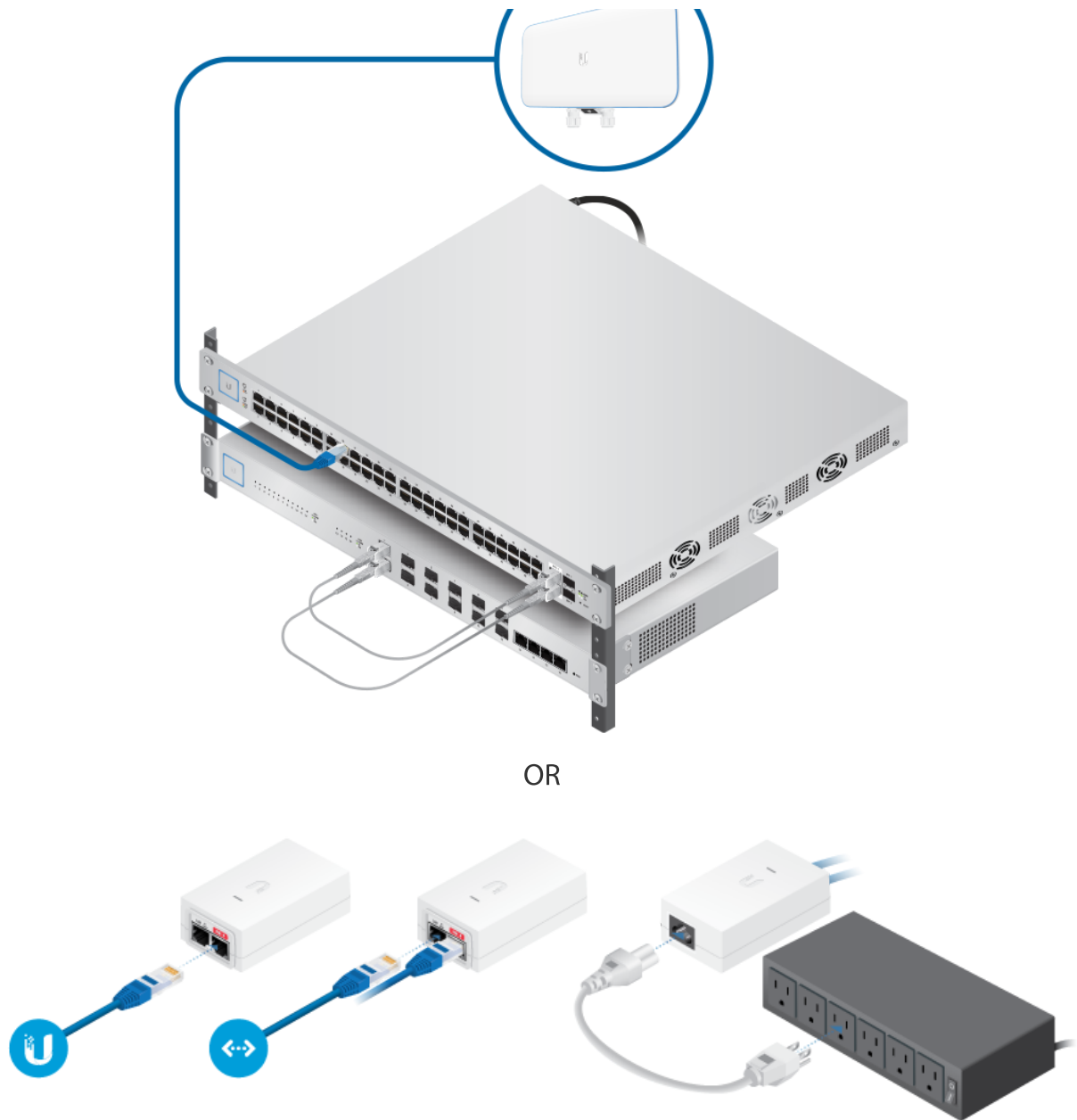


Note: By default, the UWB-XG is set to 15 dBi for its small-cell gain. To switch to its large-cell gain of 10 dBi, use the UniFi Network Application.

Connecting Power



IMPORTANT: Using the 10GbE port requires enabling flow control on the upstream switch port's configuration for maximum performance.



Specifications

UWB-XG	
Dimensions (without Mount)	471.1 x 257.5 x 94.3 mm (18.55 x 10.14 x 3.713")
Weight (without Mount)	3.2 kg (7.055 lb)
Networking Interface	(1) 10/100/1000 RJ45 Ethernet Port (1) 1/10 Gbps ICM Ethernet Port
Button	Reset
LED	RGB, Application-Controllable
Power Method	802.3bt PoE



UWB-XG Quick Start Guide

Power Supply	Power, Max. Output
Max. Power Consumption	31W
Supported Voltage Range	44-57VDC
Max. TX Power	25 dBm
MIMO	(3) 4 x 4
Operating Frequency	5 GHz
Antenna	Integrated Dual-Mode Antenna Array
Antenna Gain	
Small Cell	15 dBi
Large Cell	10 dBi
Antenna Beamwidth	
Small Cell	50°
Large Cell	90°
Wi-Fi Standards	802.11 a/n/ac/ac-wave2
Wireless Security	WEP, WPA-PSK, WPA-Enterprise (WPA/WPA2, TKIP/AES)
Mounting	VESA-Compatible Mount Pole/Wall (Brackets Included)
Operating Temperature	-40 to 70° C (-40 to 158° F)
Operating Humidity	5 to 95% Noncondensing
Weatherproofing	IP67
Certifications	CE, FCC, IC

Safety Notices

1. Read, follow, and keep these instructions.
2. Heed all warnings.
3. Only use attachments/accessories specified by the manufacturer.



WARNING: Do not use this product in location that can be submerged by water.



WARNING: Avoid using this product during an electrical storm. There may be a remote risk of electric shock from lightning.

Electrical Safety Information

1. Compliance is required with respect to voltage, frequency, and current requirements indicated on the manufacturer's label. Connection to a different power source than those specified may



UWB-XG Quick Start Guide

2. There are no operator serviceable parts inside this equipment. Service should be provided only by a qualified service technician.
3. This equipment is provided with a detachable power cord which has an integral safety ground wire intended for connection to a grounded safety outlet.
 - a. Do not substitute the power cord with one that is not the provided approved type. Never use an adapter plug to connect to a 2-wire outlet as this will defeat the continuity of the grounding wire.
 - b. The equipment requires the use of the ground wire as a part of the safety certification, modification or misuse can provide a shock hazard that can result in serious injury or death.
 - c. Contact a qualified electrician or the manufacturer if there are questions about the installation prior to connecting the equipment.
 - d. Protective earthing is provided by Listed AC adapter. Building installation shall provide appropriate short-circuit backup protection.
 - e. Protective bonding must be installed in accordance with local national wiring rules and regulations.

Limited Warranty

ui.com/support/warranty

The limited warranty requires the use of arbitration to resolve disputes on an individual basis, and, where applicable, specify arbitration instead of jury trials or class actions.

Compliance

FCC

Changes or modifications not expressly approved by the party responsible for compliance could void the user's authority to operate the equipment.

This device complies with Part 15 of the FCC Rules. Operation is subject to the following two conditions.

1. This device may not cause harmful interference, and
2. This device must accept any interference received, including interference that may cause undesired operation.

This equipment has been tested and found to comply with the limits for a Class A digital device, pursuant to part 15 of the FCC Rules. These limits are designed to provide reasonable protection against harmful interference when the equipment is operated in a commercial environment. This equipment generates, uses, and can radiate radio frequency energy and, if not installed and used in accordance with the instruction manual, may cause harmful interference to radio communications. Operations of this equipment in a residential area is likely to cause harmful interference in which case the user will be required to correct the interference at his own expense.

This radio transmitter (FCC ID: SWX-UAPSTMXG, FCC ID: SWX-M445GL, FCC ID: SWX-M445GH, and FCC ID: SWX-M11DB) has been approved by FCC.

ISED Canada

CAN ICES-3(A)/NMB-3(A)



UWB-XG Quick Start Guide

1. This device may not cause interference, and
2. This device must accept any interference, including interference that may cause undesired operation of the device.

This radio transmitter (IC: 6545A-UAPSTMXG, IC: 6545A-M445GL, IC: 6545A-M445GH, and IC: 6545A-M11DB) has been approved by ISED Canada.

The device for operation in the band 5150-5250 MHz is only for indoor use to reduce the potential for harmful interference to co-channel mobile satellite systems.

CAN ICES-3(A)/NMB-3(A)

Le présent appareil est conforme aux CNR d'ISDE Canada applicables aux appareils radio exempts de licence. L'exploitation est autorisée aux deux conditions suivantes :

1. l'appareil ne doit pas produire de brouillage;
2. l'appareil doit accepter tout brouillage radioélectrique subi, même si le brouillage est susceptible d'en compromettre le fonctionnement.

Le présent émetteur radio (IC: 6545A-UAPSTMXG, IC: 6545A-M445GL, IC: 6545A-M445GH, and IC: 6545A-M11DB) ont été approuvés par ISDE Canada.

Les dispositifs fonctionnant dans la bande 5150-5250 MHz sont réservés uniquement pour une utilisation à l'intérieur afin de réduire les risques de brouillage préjudiciable aux systèmes de satellites mobiles utilisant les mêmes canaux.

IMPORTANT NOTE

Radiation Exposure Statement

- This equipment complies with radiation exposure limits set forth for an uncontrolled environment.
- This equipment should be installed and operated with minimum distance 24 cm between the radiator and your body.
- This transmitter must not be co-located or operating in conjunction with any other antenna or transmitter.

AVIS IMPORTANT

Déclaration sur l'exposition aux rayonnements

- Cet équipement est conforme aux limites prévues pour l'exposition aux rayonnements dans un environnement non contrôlé.
- Lors de l'installation et de la mise en fonctionnement de l'équipement, assurez-vous qu'il y ait une distance minimale de 24 cm entre l'élément rayonnant et vous.
- Cet émetteur ne doit être installé à proximité d'aucune autre antenne ni d'aucun autre émetteur, et ne doit être utilisé conjointement à aucun autre de ces appareils.

Australia and New Zealand



Warning: This equipment is compliant with Class A of CISPR 32. In a residential environment this equipment may cause radio interference.



Nota: Este equipamento não tem direito à proteção contra interferência prejudicial e não pode causar interferência em sistemas devidamente autorizados.

CE Marking

CE marking on this product represents the product is in compliance with all directives that are applicable to it.



Country List



AT	BE	BG	CY	CZ	DE	DK	EE	EL	ES	FI	FR	HR	HU
IE	IT	LV	LT	LU	MT	NL	PL	PT	RO	SE	SI	SK	UK

BFWA (Broadband Fixed Wireless Access) members noted in blue



Note: This device meets Max. TX power limit per ETSI regulations.

The following apply to products that operate in the 5 GHz frequency range:



Note: This device is restricted to indoor use only when operating in the 5150 - 5350 MHz frequency range within all member states.



Note: All countries listed may operate at 30 dBm. BFWA member states may operate at 36 dBm.



Note: Operation in the 5.8 GHz frequency band is prohibited in BFWA member states. Other countries listed may use the 5.8 GHz frequency band.

WEEE Compliance Statement

Declaration of Conformity

Online Resources



UWB-XG Quick Start Guide



© 2023 Ubiquiti Inc. All rights reserved.